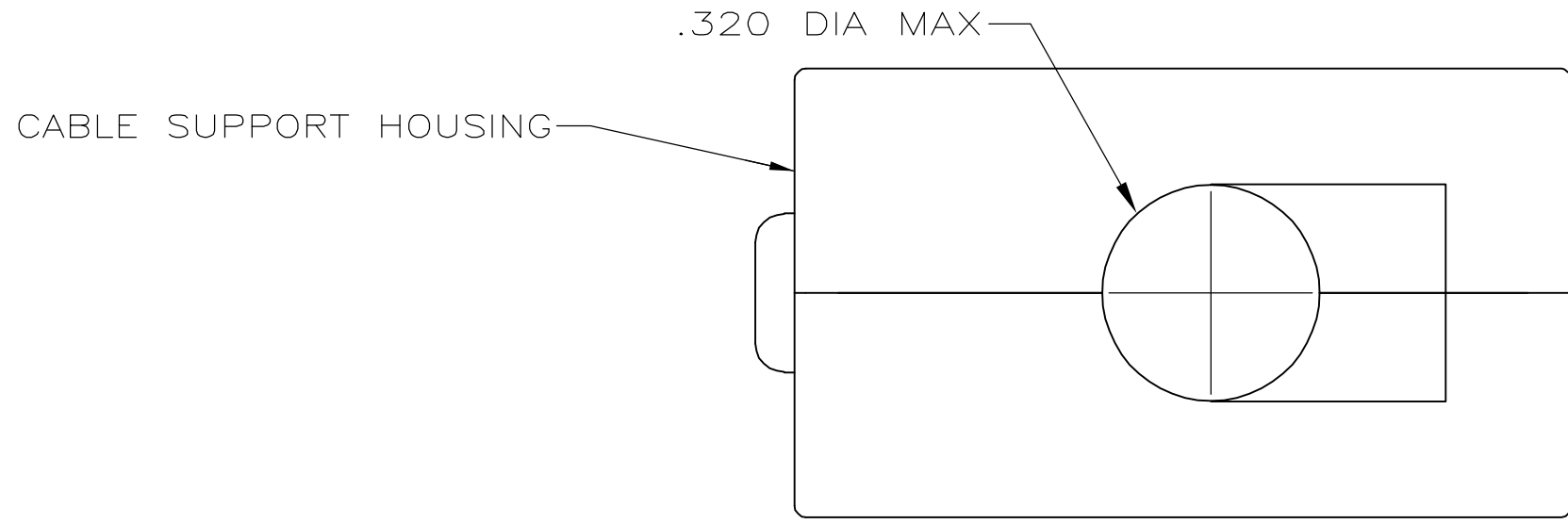
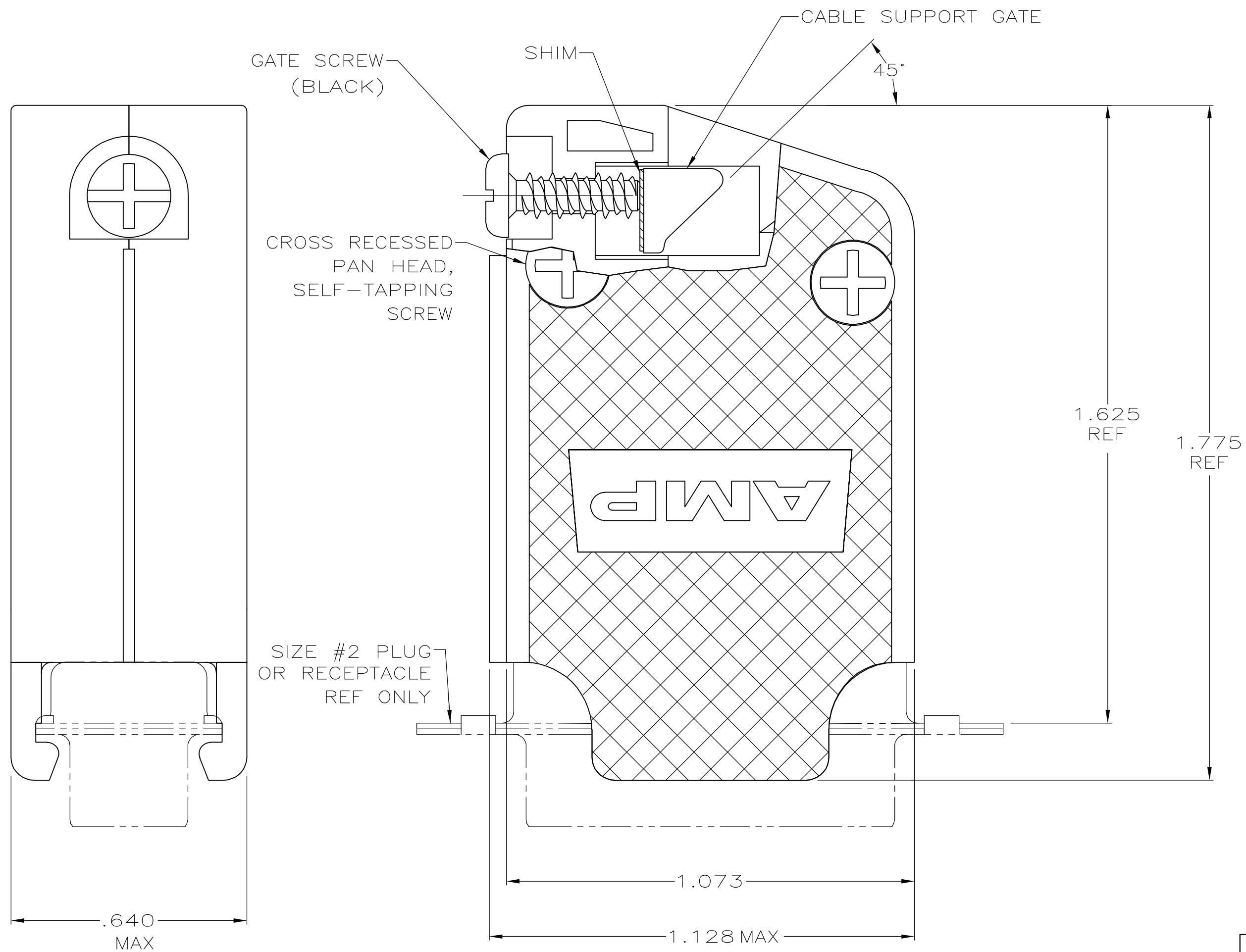


THIS DRAWING IS UNPUBLISHED. RELEASED FOR PUBLICATION
 © COPYRIGHT 2006 BY TYCO ELECTRONICS CORPORATION. ALL RIGHTS RESERVED.

| LOC | DIST | REVISIONS | | | |
|-----|------|-------------|------------------------------|---------|-------|
| P | LTR | DESCRIPTION | DATE | DWN | APVD |
| GP | 00 | 0 | RELEASED PER EC 0513-0221-05 | 30AUG05 | RR JG |



- PARTS PACKAGED UNASSEMBLED.
 - COMPONENTS INDIVIDUALLY BULK PACKED & SHIPPED AS A UNIT PACKAGE KIT.
- 3 MOLDED PARTS: POLYPROPYLENE, BLACK.
SHIM: BRASS.
SCREWS: COLD ROLLED STEEL.
- 4 GATE SCREWS: BLACK ZINC PROSPHATE
SELF TAPPING SCREWS: ZINC PLATED CLEAR CHROMATE COATING.



| | | |
|-------------------|-----------|-----------|
| COMBINATION DRIVE | 2 | 5205730-3 |
| COMBINATION DRIVE | AS SHOWN | 5205730-1 |
| SCREW VERSION | PACKAGING | PART NO |

| | | | | |
|----------------------------------------|--------------|--------------------------|-----------------------------------|-----------------|
| THIS DRAWING IS A CONTROLLED DOCUMENT. | | DWN R.RICHARDSON 30AUG05 | tyco Tyco Electronics Corporation | |
| DIMENSIONS: INCHES | | CHK C. ROHDE 30AUG05 | Harrisburg, PA 17105-3608 | |
| TOLERANCES UNLESS OTHERWISE SPECIFIED: | | APVD M.WALMSLEY 30AUG05 | NAME | |
| 0 PLC ± - | 1 PLC ± - | PRODUCT SPEC | | |
| 2 PLC ± - | 3 PLC ± .005 | APPLICATION SPEC | | |
| 4 PLC ± - | ANGLES ± - | FINISH | | |
| MATERIAL 3 | FINISH 4 | WEIGHT - | SIZE A2 | CAGE CODE 00779 |
| CUSTOMER DRAWING | | SCALE 4:1 | DRAWING NO C=5205730 | RESTRICTED TO - |
| | | SHEET 1 of 1 | REV 0 | |

5205730